



# Canada's Global Health Research Initiative:

## A Partnership in Response to the Challenges of Global Health



Canadian  
International  
Development  
Agency

Agence  
canadienne de  
développement  
international

IDRC



CRDI



CIHR IRSC



Health  
Canada

Santé  
Canada

GLOBAL HEALTH RESEARCH INITIATIVE  
INITIATIVE EN SANTÉ MONDIALE

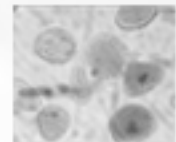
**By Erica Di Ruggiero, Associate Director  
CIHR-Institute of Population & Public Health  
On behalf of the GHRI partners**

# The Global Health Research Initiative

- Through the **Global Health Research Initiative**, four federal agencies with complementary mandates and expertise will enable Canada to effectively address the health and health system priorities of low- and middle-income countries (LMICs) through innovative research and capacity building programmes, strategic collaborations and by influencing global health policy and research agendas.



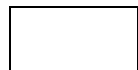
GLOBAL HEALTH RESEARCH INITIATIVE



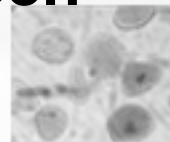
# Global Health Research Initiative (GHRI)

## – Key Milestones (1 of 2)

- ‘Champions’ persuade agency heads to collaborate to strengthen and coordinate Canada’s efforts in global health research:
  - Canadian Institutes of Health Research (CIHR)
  - Canadian International Development Agency (CIDA)
  - Health Canada
  - International Development Research Centre (IDRC)
- Framework agreement signed in 2001 between CIDA, IDRC, Health Canada and CIHR
- GHRI Secretariat established at CIHR

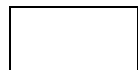


GLOBAL HEALTH RESEARCH INITIATIVE



# Global Health Research Initiative (GHRI) – Key Milestones (2 of 2)

- **70+ grants funded over next five years to seed Canadian and low- and middle-income country (LMIC) partnerships on a broad range of issues; response proved CAN and LMIC interest and capacity; and shaped GHRI vision, concepts and program features**
- **External reviews and recommitment to the partnership; as a result:**
  - **Phase 1 of 10-year Teasdale-Corti Research Partnership Program was launched in 2006**
  - **GHRI Secretariat strengthened and moved to IDRC**



GLOBAL HEALTH RESEARCH INITIATIVE



# GHRI - Strategic Objectives

***Strengthen global health research to address priority challenges of LMICs***

***Inform and influence policy relating to health, global health development and global health research***

***Strengthen information exchange and collaboration among GHRI agencies and strategic partners***

***Foster organizational excellence in GHRI and other global health organizations***



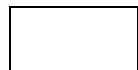
GLOBAL HEALTH RESEARCH INITIATIVE



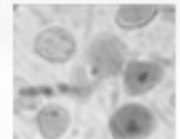
# GHRI – Priority Themes

- **Health policy and health systems;**
- **Prevention and control of pandemics and/or emerging infectious diseases;**
- **Prevention and control of chronic diseases and their underlying causes, and related healthy public policy issues; and**
- **Interactions of health, environment and development.**

**Gender, equity and ethics are seen as integral components of these four themes**

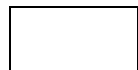


GLOBAL HEALTH RESEARCH INITIATIVE

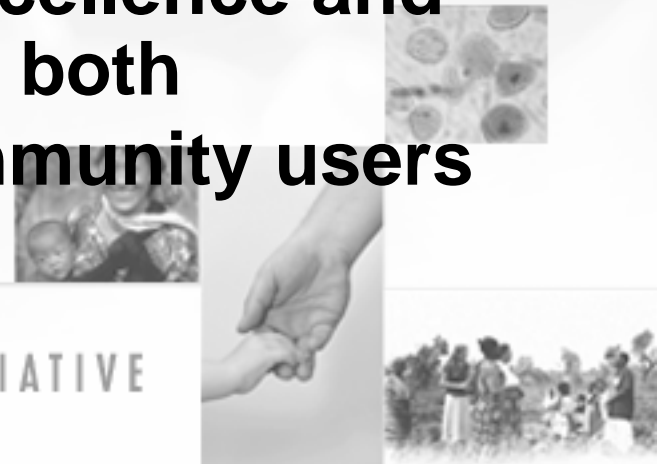


# GHRI - Program Features

- **Responds to LMIC needs**
- **Research- research user partnerships**
- **Knowledge transfer and exchange**
- **Egalitarian LMIC-Canada teams**
- **Interdisciplinary approaches to priority LMIC issues**
- **Merit review – scientific excellence and potential impact; panels of both scientists and system-community users**

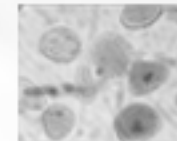


GLOBAL HEALTH RESEARCH INITIATIVE



# GHRI - Funding modalities

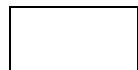
- Research plus KTE grants
- Team funding for research, capacity development and linkage and exchange for KTE
- Leadership fellowships – researchers and system managers or policy makers
- Grants to build capacity for prevention trials
- Building capacity for evidence-informed decision-making:
  - EXTRA
  - Linkage and exchange grants
- Building evidence base for granting



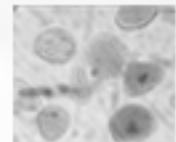
GLOBAL HEALTH RESEARCH INITIATIVE

# GHRI – Current Programs

- **Canadian International Immunization Initiative, Phase 2 (CII2): operational research, uptake**
- **HIV/AIDS Prevention Trials Capacity Building: capacity development, uptake**
- **Teasdale-Corti Research Partnership Program (T-C): research, capacity development, uptake**

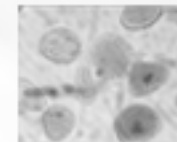


GLOBAL HEALTH RESEARCH INITIATIVE



# Teasdale-Corti Research Partnership Program - components

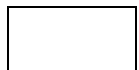
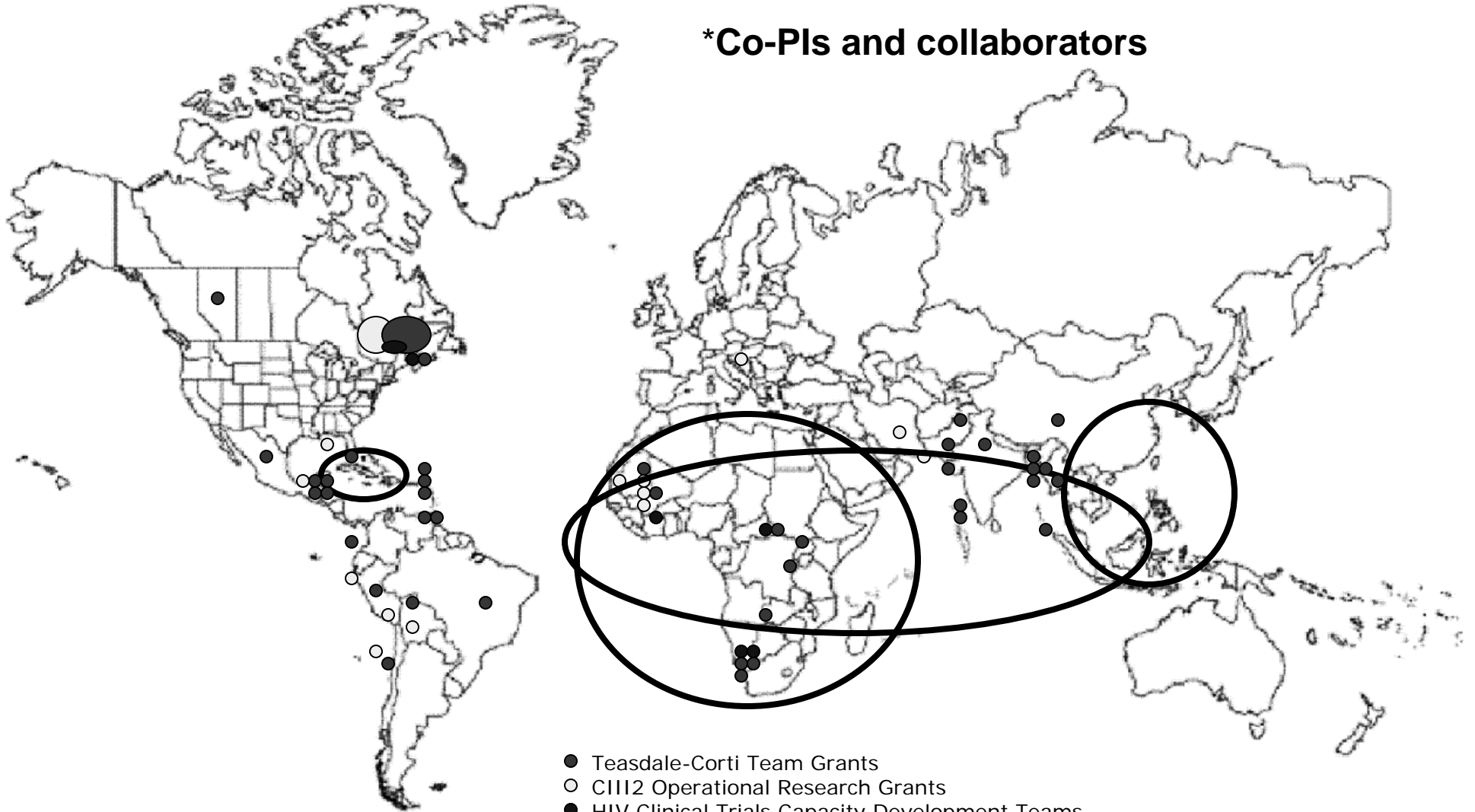
- **Team grants** – 14 teams received ~ \$1.5m each over 4 years to work in priority theme areas
- **Global Health Leadership awards** – up to 15 emerging LMIC leaders (2 streams) receive up to \$200k each over 3-4 yrs
- **KTE grants** – strengthening the draw of research into health systems
- **Monitoring and evaluation**



GLOBAL HEALTH RESEARCH INITIATIVE

# Participation of Canadian and LMIC Institutions\* in GHRI-funded Grants

\*Co-PIs and collaborators



GLOBAL HEALTH RESEARCH INITIATIVE



# GHRI – Programs to be launched shortly

- **Haiti Immunization (adjunct to CIII2)**  
operational research, uptake (? CIII3)
- **Avian and Pandemic Influenza:** scoping, capacity development, uptake
- **African Health System Initiative:** research, capacity development, uptake
- **Capacity building grants for HIV Vaccine Prevention Trials** – capacity development, uptake



GLOBAL HEALTH RESEARCH INITIATIVE



# Global Health Programs to be launched shortly by CIHR

- Meetings, planning and dissemination grants in global health (e.g. scientific or consensus meeting support, knowledge exchange and linkage activities, 25K)
- Catalyst grants (multiple themes, including global health; funds to pursue new areas of investigation/innovation, generate preliminary knowledge, observations, facilitate team formation, etc. )



GLOBAL HEALTH RESEARCH INITIATIVE



# Global Health Research Initiative – Contact Information

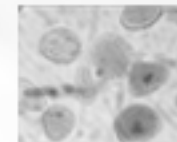
**Linda Murphy**

Special Advisor and Program Coordinator

[lmurphy@idrc.ca](mailto:lmurphy@idrc.ca)

(613) 236-6163 x 2575

[www.ghri.ca](http://www.ghri.ca)



GLOBAL HEALTH RESEARCH INITIATIVE